

The **R**AMPAGE

Wyoming Wild Sheep Foundation

WINTER 2011



Photo credit:: Scott Shreve

2011-2012 Calendar of Events

December 2-3, 2011

Wyoming Wild Sheep Foundation Winter Meeting (see page 6 for details!)

National Bighorn Sheep Interpretive Center/Headwaters Convention Center/Whiskey
Basin BHS Winter Range, Dubois, WY

January 18-21, 2012

Wild Sheep Foundation 2012 Sheep Show

Silver Legacy Resort/Reno-Sparks Convention Center, Reno, NV

February 8-11, 2012

Grand Slam Club/Ovis 2012 Convention

Grand Sierra Resort, Reno, NV

June 1-2, 2012

Wyoming Wild Sheep Foundation Annual Convention

Parkway Plaza, Casper, WY

Wyoming WSF Board & Membership Meetings

Wyoming WSF holds its winter board/membership meeting on the first Saturday of December and summer convention/board/membership meeting the first Saturday in June. Details and locations are listed in the Calendar of Events and online at www.wyomingwildsheep.org.

Funding requests for consideration at the winter board meeting are due no later than Nov. 1. Funding requests for consideration at the summer board meeting are due no later than May 1.

The Grant-In-Aid request form is available on the Wyoming WSF website and on pages 26 and 27 of this newsletter. Contact address:

Wyoming Wild Sheep Foundation
P.O. Box 666
Cody, WY 82414
E-mail: info@wyomingwildsheep.org

WYOMING WILD SHEEP FOUNDATION

The RAMPAGE Newsletter

ADVERTISING RATES PER ISSUE

FULL PAGE	\$180.00
1/2 PAGE	\$100.00
1/4 PAGE	\$ 55.00
1/8 PAGE	\$ 35.00

PLEASE SEND COPY WITH YOUR CHECK TO

Wyoming WSF

P.O. Box 666, Cody, WY 82414



2011-12 Wyoming WSF Officers & Board of Directors

President::

Mike Porter (6/2012)
2321 Easthaven
Casper, WY 82609
Phone: (307) 258-7040
E-mail: fullcurl@yahoo.com

Vice President::

Jim Collins (6/2013)
910 Buchanan Road
Thermopolis, WY 82443
Phone: (307) 864-3929
E-mail: sdckjim@rtconnect.net

Secretary:

Katie Luthy (6/2012)
P.O. Box 176
Story, WY 82842
Phone: (307) 752-8347
E-mail: kt_luthy@hotmail.com

Treasurer:

Joni Miller (6/2012)
6722 Hwy. 28
Lander, WY 82520
Phone: (307) 332-9119
E-mail:
joni.miller@fremontcountygovernm
ent.org

Past President::

Bob Sundeen (6/2012)
P.O. Box 111
Buffalo, WY 82834
Phone: (307) 217-1110
E-mail: trailswest@vcn.com

Director:

David Bishop (6/2013)
P.O. Box 66
Moran, WY 83013
Phone: (307) 267-7041
E-mail: davidbishop@aol.com

Director:

Mike Cuin (6/2012)
2215 Dunblane
Rawlins, WY 82301
Phone: (307) 328-1048
E-mail:
mikecuin606@hotmail.com

Director:

Meade Dominick (6/2012)
2832 Chopper Lane
Cody, WY 82414
Phone: (307) 899-1490
E-mail:
meadedominick@hotmail.com

Director:

Jerry Galles (6/2013)
3332 Allendale
Casper, WY 82601
Phone: (307) 234-6100
E-mail:
jerrygalles@wyobeam.com

Director:

Daniel Hinz (6/2012)
540 Road 2AB
Cody, WY 82414
Phone: (307) 250-0056
E-mail: dhinz@tctwest.net

Director:

Raleigh Whalen (6/2013)
614 S. 8th
Laramie, WY 82070
Phone: (307) 631-0741
E-mail: wyowhalen@gmail.com

WY Game & Fish Liaison:

Doug McWhirter
2820 State Highway 120
Cody, WY 82414
Phone: (307) 527-7125 or
(800) 654-1178
Fax: (307) 587-5430
E-mail:
Doug.McWhirter@wyo.gov

Executive Director:

Kevin Hurley
P.O. Box 666
Cody, WY 82414
Phone: (307) 578-8613
Cell: (307) 899-9375
E-mail:
info@wyomingwildsheep.org

WSF Chapter/Affiliate Coord.

Becky Layne, WSF HQ
720 Allen Ave.
Cody, WY 82414-3402
Phone: (307) 527-6261
Fax: (307) 527-7117
E-mail:
blayne@wildsheepfoundation.or
g

Wanted: Your E-mail Address!

Wyoming WSF is looking for e-mail addresses from our membership so that we can convey important information and communications in the timeliest fashion possible. If you have not submitted an e-mail address or need to update the one we have on file, please send it to info@wyomingwildsheep.org.

Wyoming WSF will not share your e-mail address with any third parties, nor will you receive solicitations or "spam" from our organization.

WY-WSF President's Message

Hello! I hope everyone had a great summer. The hunting season is here, so I hope everyone is taking time to get out and enjoy the fall. Last weekend, my 9 year old son and I stalked and harvested a nice antelope. Great memories, enjoy them while you can.

I am pleased to announce the Wyoming Wild Sheep Foundation convention in June 2011 was highly successful. The convention gross income was \$110,673, and the best news was the expenses were \$36,268. The convention netted \$74,405 to use for sheep projects in Wyoming; this represents a 62% increase from 2010. Outside the convention, we were also fortunate to receive and phone auction three 2011 Wyoming Game and Fish Commissioner licenses, netting an additional \$27,500 for sheep projects. These are terrific numbers! Hats off to everyone who sponsored, donated to, and/or attended this convention. I want to thank everyone for their generous work and support.

This past year has had many changes for WY-WSF. The board and membership voted to hire Kevin Hurley as our (part-time) Executive Director for the Wyoming Wild Sheep Foundation in February 2011. Kevin has done an amazing job organizing, prioritizing, and implementing functions the board has voted on. Membership lists are current, and WY-WSF is in a strong financial position. Kevin has also been instrumental in organizing hunt swaps with other WSF chapters/affiliates for our respective banquets.

Our goal is to increase communication to our membership, which will hopefully lead to higher attendance at our winter and summer conventions. The WY-WSF winter meeting is scheduled for December 2 & 3 2011 in Dubois, WY. Please see page 6 of this *Rampage* for details! PLEASE TRY TO ATTEND!

As sheep are harvested this year, there have been many great rams taken. The work undertaken by the current and past boards has directly resulted in high-quality bighorn sheep populations in Wyoming. Please keep supporting Wyoming bighorns through this great organization.

The board is currently working on establishing the Wyoming Wild Sheep Foundation Endowment. The endowment will serve as an avenue for donors to give to WY-WSF, in many different ways. If you have ideas or questions regarding the endowment, please feel free to call me at 307-235-7786.

On July 11th, members of the WY-WSF board attended a seminar in Laramie by Dr. Sri from Washington State University on studies that he is doing on bighorn sheep and domestic sheep interaction. It was a fascinating discussion, full of cutting edge science and discoveries. We have invited (and he has accepted!) Dr. Sri to speak about his research at our June 2, 2012 convention. We wish Dr. Sri the best in continued studies on the effects of commingling domestic and wild sheep; WY-WSF has again approved funding to assist Dr. Sri's ongoing research.

Best of luck to everyone this fall. Thank you for supporting the Wyoming Wild Sheep Foundation. Hope to see many of you in December in Dubois!

Michael J. Porter (Life Member #323), WY-WSF President

WY-WSF Executive Director's Message

Wyoming Wild Sheep Foundation members: greetings all! Fall 2011 bighorn sheep hunting has gotten off to an outstanding start already in the Cowboy State. Great rams have been taken in many hunt areas, including a 8+ ram (185+) in Hunt Area 19 near Laramie Peak, a 6.35-year old 186+ ram (one of the lambs from the January 2006 Missouri Breaks/Montana HD 680 bighorn transplant into Devil's Canyon in Hunt Area 12), and lots of other high-quality, mature rams. After only 4 weeks of hunting, the Cody WGFD office had plugged ~50 rams, compared to just over 100 in 10 weeks of "plugging" last year. All in all, bighorn hunting in Wyoming is remarkable. Congratulations to those of you who were able to hunt (or help!) bighorns in 2011. Please send us your stories/photos, for our website and for *The Rampage*. We live vicariously through our friend's hunting experiences, and wish it were us. I had the good fortune and luck to partake myself this year, in both an Alaskan Dall sheep hunt for myself, and to assist long-time friend and colleague Doug McWhirter in his pursuit of a Hunt Area 3 ram. Best of luck to those still hunting this fall!!

W Y - W S F

In Memoriam

Wild sheep, the conservation community, and Wyoming WSF prematurely lost 2 good friends in July 2011 and another in September 2011. Our thoughts, prayers, and remembrances go out to the families and close friends of those individuals.

On July 12, 2011, Glenn Anderson (WY-WSF Life Member #95) of Anchorage, AK unexpectedly passed away due to an illness. Glenn was a biologist, forester, and fire specialist, and he and his family moved to Alaska in 1980. Most of us knew Glenn as an avid hunter and outdoorsman, and he served the Alaska Chapter of FNAWS for many years as a board member and, ultimately, as their President.

Mark Fountain (WY-WSF Life Member #102) of Montgomery, MA died July 27, 2011 while diving for lobster off the upper Florida Keys. Mark enjoyed coming to Wyoming and Montana to hunt big game, and WY-WSF Past-President Cole Benton was fortunate enough to guide Mark on 5 hunts, for 8 animals. Every year, Mark was a ready donor to help underwrite the WY-WSF Life Member complimentary breakfast, even though he was only able to attend this event once.

On September 23, 2011, Mike Tonn (WY-WSF Life Member #352) of Gillette, WY unexpectedly passed away. Mike was an accomplished big game and mountain hunter, having just completed his Grand Slam ® of North American rams recently. Mike loved to hunt wild sheep, and he was a great supporter of wild sheep organizations, joining WY-WSF as a Life Member in spring 2011.

These men all left their mark on the wild sheep community; we will miss them all.



Wyoming Wild Sheep Foundation 2011 Winter Membership Meeting!!

Friday (December 2nd) & Saturday (December 3rd), 2011

Location(s): National BHS Interpretive Center, Headwaters Convention Center, Whiskey Basin Wildlife Habitat Management Area, Dubois, WY

Friday (December 2nd)

- WY-WSF Board Meeting, Headwaters Center (2:00 - 5:00 PM)
- Reception/Light Meal (comp.)/Cash Bar, NBSIC (6:00 - 9:00 PM)
[includes Whiskey Basin BHS update from WGFD N. Lander wildlife biologist and Whiskey Basin Tech Committee Chair Greg Anderson]

Saturday (December 3rd)

- Tour of Whiskey Basin BHS Winter Range (8:00 AM - 12:00 noon)
[we'll carpool as much as possible, from NBSIC!!]
- WY-WSF Membership Meeting, Headwaters Center (2:00 - 4:00 PM)
- Happy Hour/Cash Bar, Headwaters Center (5:00 - 6:30 PM)
- Catered Dinner/Pig Roast (\$15/adult; \$10/kids <16)
Headwaters Center (6:30 - 7:30 PM)
- WY-WSF FUN Night/Fundraiser, Headwaters Center (7:30 - 9:00 PM)

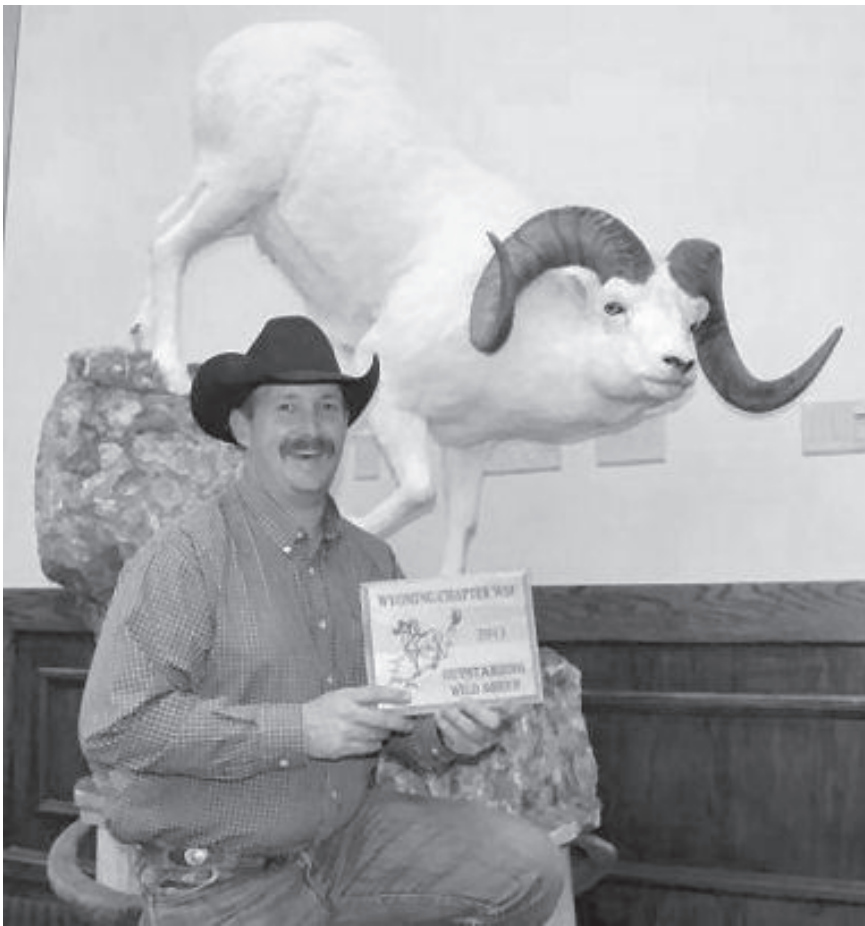
A block of rooms has been reserved for both Friday and Saturday nights at the Stagecoach Motel in downtown Dubois (307-455-2303) at a rate of \$55 + tax/room/night.

For further information, or to let us know you're coming (please let us know by November 28th, so we can order the right-sized pig!!), please contact WY-WSF at info@wyomingwildsheep.org or call 307-578-8613, or the National Bighorn Sheep Interpretive Center at info@bighorn.org or call 307-455-3429.



NATIONAL
BIGHORN SHEEP
INTERPRETIVE
CENTER





Tyler Benton and proud papa (2011 Ron Ball Award winner and past 3-term Wyoming WSF President) Cole Benton in the field with Tyler's 2009 terrific Alaska Dall ram.

Selected as the winning entry in the "Outstanding Ram" competition at the April 2011 Wyoming Association of Taxidermy Artists (WATA) annual convention in Casper, taxidermist Gary Bessler (Buffalo, WY) poses in front of his lifesize mount of WY-WSF Life Member #40 Tyler Benton's (Buffalo, WY) Dall ram, taken near Tok, AK in 2009.

This award, presented annually by WATA at their annual convention, is sponsored by WY-WSF. FYI, the 2012 WATA convention will be held in Cody, WY on April 26-28th, at the Holiday Inn. For further information, please visit the WATA website. <http://wyata.com/>



Photo : David Luzmoor

Trails West Outfitters LLC

Bob Sundeen

• Big Game Hunting •

• Summer Pack Trips ~ Fishing Trips •

P.O. Box 111
Buffalo, WY 82834
Phone: 307-217-1110
E-mail: trailswest@vcn.com
Web: www.trailswestoutfitters.com



Permitted on Shoshone National Forest

Wyoming Wild Sheep Foundation

2012 Wyoming Game and Fish Commissioner's License Raffle

Tickets are \$100.00 each. Limited to 300 tickets.

~~~~~

*1<sup>st</sup> PRIZE: WYOMING GAME AND FISH COMMISSIONER'S 2012  
ELK, DEER, OR PRONGHORN LICENSE*

*(Donated by WGF Commissioner Ed Mignery, Sundance)*

2<sup>nd</sup> Prize: 7 Day Caribbean Cruise

3<sup>rd</sup> Prize: Browning A-Bolt .325 WSM Rifle

4<sup>th</sup> Prize: Nikon 60mm Fieldscope III Spotting Scope

5<sup>th</sup> Prize: Remington 700 SPS Stainless .300 Ultra Mag Rifle

6<sup>th</sup> Prize: Marlin 1895 45-70 Lever Action Guide Gun

7<sup>th</sup> Prize: Nikon Monarch X 10.5 X 45 Binoculars & RifleHunter 1000 Rangefinder

8<sup>th</sup> Prize: Nikon Monarch 3 X 12 42mm Riflescope

9<sup>th</sup> Prize: Canon PowerShot 12.1 Megapixel Digital Camera

10<sup>th</sup> Prize: \$300.00 Gift Certificate to a Sporting Goods Store of Your Choice

Drawing to be held June 2, 2012 at the Wyoming WSF annual banquet in Casper, Wyoming. Winners need not be present to win. For more information and for the number of remaining tickets, visit our web site at [www.wyomingwildsheep.org](http://www.wyomingwildsheep.org).

For tickets, mail check to: WY-WSF Secretary Katie Luthy, P.O. Box 176, Story, WY 82842 (Phone): 307-752-8347 [kt\\_luthy@hotmail.com](mailto:kt_luthy@hotmail.com)

Commissioners' License is good for Elk or Deer or Pronghorn Antelope in Wyoming. Purchase of regular license required. Independent of preference points or license draw results. Winners are responsible for all applicable licenses and taxes. Wyoming WSF Board of Directors are eligible to participate in all fund raising activities.



# Mark Your Calendars for our 2012 Annual Convention June 1-2, 2012, Parkway Plaza, Casper



(For WY-WSF office use only)  
Destination/Item #

## Art, Merchandise, Cash Donation Form

Donor Name: \_\_\_\_\_

Company Name (if desired): \_\_\_\_\_

Mailing Address: \_\_\_\_\_

City: \_\_\_\_\_ State: \_\_\_\_\_ ZIP: \_\_\_\_\_

Telephone: \_\_\_\_\_ E-mail: \_\_\_\_\_

Donor's Signature (if available): \_\_\_\_\_

Description of Donation: \_\_\_\_\_

Date of donation: \_\_\_\_/\_\_\_\_/\_\_\_\_

Est. Value of Donation: \$ \_\_\_\_\_ Item is 100% Donated?: Y or N

Donor Wishes % split (50% maximum split)?: Y or N

If Yes, specify % split desired by donor: \_\_\_\_\_%

WY-WSF makes no representation, express or implied, concerning deductibility of this item for federal income tax purposes. Donor should contact tax adviser for questions regarding deductibility of this donation. WY-WSF is a tax-exempt 501(c) organization.

\_\_\_\_\_  
*Signature of WY-WSF Representative*

Date: \_\_\_\_/\_\_\_\_/\_\_\_\_

[White Copy to Donor; Yellow Copy to WY-WSF]

P.O. Box 666, Cody, WY 82414

307-578-8613

[info@wyomingwildsheep.org](mailto:info@wyomingwildsheep.org)

[www.wyomingwildsheep.org](http://www.wyomingwildsheep.org)

**If you know someone who might be interested/willing to make a donation to WY-WSF, please provide them with one of these donation forms, and ask that they make contact ([info@wyomingwildsheep.org](mailto:info@wyomingwildsheep.org)) no later than May 1, 2012!!**

# WY-WSF Membership Application

If you see a “\*\*\*” next your name on the mailing label, your WY-WSF membership has expired. Renew your membership today using the form below. If you’ve changed your address, use the form below to advise us of the change or you can email address changes to [info@wyomingwildsheep.org](mailto:info@wyomingwildsheep.org)



Annual Membership \_\_\_\_\_ \$25.00

3-Year Membership \_\_\_\_\_ \$65.00

Lifetime Membership \_\_\_\_\_ \$500.00\*  
(includes choice of a life member knife or plaque)



**[\* Optional payment of \$100 down, \$100/quarter, until paid]**

\_\_\_\_\_ Renewal    \_\_\_\_\_ New Member    \_\_\_\_\_ Life Member

Name \_\_\_\_\_ Telephone # (\_\_\_\_) \_\_\_\_\_

Address \_\_\_\_\_ State \_\_\_\_\_ Zip \_\_\_\_\_

City \_\_\_\_\_ Email: \_\_\_\_\_

**Life Members Only:**    \_\_\_ Fixed blade knife    \_\_\_ Locking blade knife    \_\_\_ Plaque

*Make checks payable to: Wyoming Wild Sheep Foundation  
P.O. Box 666, Cody, WY 82414*

**WY WSF Name Tags** are available for purchase. The name tags are \$10 each. Life members who order them will have their life member designation included. To order a name tag, complete the form below and mail it along with a check (made payable to WY-WSF) to: Wyoming Wild Sheep Foundation, P.O. Box 666, Cody, WY 82414



## *Wyoming Wild Sheep Foundation nametags (\$10):*

Please print your name below as you would like it to appear on your nametag. Other information to only be used for WY-WSF mailing purposes, or in the event of followup questions.

**First Name**

**Last Name**

|  |  |  |
|--|--|--|
|  |  |  |
|--|--|--|

**Address**

**City**

**State**

|  |  |  |
|--|--|--|
|  |  |  |
|--|--|--|

**Zip Code**

**Phone Number**

|  |  |
|--|--|
|  |  |
|--|--|

**E-Mail Address**

|  |
|--|
|  |
|--|





### ***Wanted: Your Hunt Story & Photos!***

If you have a hunt story and photos that you'd like to share, we want to print it! Just send it to Wyoming WSF, and we'll try to publish it in our semi-annual newsletter, *The Rampage*. Photos are also welcome. Send your story and photo(s) to: Wyoming WSF, P.O. Box 666, Cody, WY 82414

Stories can also be e-mailed (WORD .doc format, please) to: [info@wyomingwildsheep.org](mailto:info@wyomingwildsheep.org). E-mailed photos should be in jpeg format, 300 dpi.



*Photo credit: Greg & Brenda Michelena*



## “SHORT BUT SWEET” 2011 WYOMING SHEEP HUNT

John Holbrook, Yuma, AZ

I was fortunate enough to draw one of the two random non-resident tags in Area 4 this year. With 415 first choice applicants, I can only claim divine intervention as the reason for my success. I made arrangements to hunt with Gary Fales Outfitting, with Brett Richmond as my guide. I knew that I would be in good hands with an experienced sheep guide that knew the area well. I arrived in Cody and we packed in with Brett's lifelong friend Troy and seven great Tennessee Walking horses. We were up early the next morning, glassing the mountains around camp. There were a few sheep spotted, but they were too far away to tell what they were, so we headed out horseback. We made our way into a beautiful basin that looked very promising. Brett decided we needed to leave the horses and hike further up the basin. As we approached the crest of a ridge, we stayed low, peeking over the top. Nothing was out in the open, so we all started glassing. Right away, three bedded rams were spotted at around 1,000 yards on a rocky ridgetop. There were three mature rams, with two shooters in the group. We waited them out for a couple of hours, when more rams started coming over the top from the back side of the ridge. When it was all over, there were thirteen rams in the group. They came off the rocky ridge down to the grassy area below them, and were getting closer as they fed. We were watching the two biggest rams in the group and finally decided which one was the best. He looked like he had more mass and carried it well down the length of his horns, while the other ram was slightly longer but not as heavy. The rams were ranged at a little over 500 yards, and the decision was made to take the shot. Brett kept a close watch as I took the shot with his Gunwerks 7mm. The ram went about 35 yards, then went down for good. After some high fives, we headed down to see the ram and found that he looked better close-up than he did through the spotting scope. He was a beautiful mature ram with great mass on his broomed horns, and had a perfect cape. We took plenty of pictures and got everything ready for the trip back to camp. We got back around midnight after walking the last hour in the rain. We celebrated and had a great time laughing about my reluctance to shoot such a great ram. The ram scored 173+”. We stopped by the Wild Sheep Foundation office, and Kevin Hurley aged my ram at 8½ years, exactly what Brett said. This was the shortest and sweetest sheep hunt I've ever been on! I would like to express my gratitude to Brett Richmond and Gary Fales Outfitting for an awesome hunt in the beautiful mountains





## 2011 Wyoming Hunt Area 5 Ram—Tyler Benton (WY-WSF Life Member #40), Buffalo, WY

It all started in 1994 when I was able to start putting in for a Wyoming sheep tag. Every year, I hoped to see that license in the mail. Finally, in May 2011, it happened! After a phone call to dad (Cole) and good friend Josh Martoglio, the plans started getting put together. Summer went by fast with ranch and haying activities. The next thing I knew, it was time to go. On August 29<sup>th</sup>, my friend and taxidermist Gary Bessler and myself headed to Meeteetse to meet up with Josh and Bob Sundeen. The next morning, we headed for the Jack Creek trailhead, packed up the horses, and up the Greybull we went. It was a nice ride in, and after a couple of hours around camp, we were off to bed. The next day, Josh, Gary, and I got some gear together for a spike camp, said our goodbyes, and we were off. That evening, a group of rams came out above our spike camp, with a couple of nice rams in it. With the next day being the opener, we hoped that they would hang around. Opening morning we saw some nice sheep but just not the “one.” Later that afternoon, Josh spotted a good ram but I couldn’t get a good shot at him, so we left hoping to find him the next day. The next morning brought more sheep, and by early afternoon, we found our ram again and started working in on him. Four hours later, he finally presented me with a shot. One shot is all it took and he went down, and down and down and down. Four or five hundred yards later, he finally stopped rolling. By the time Josh and I got him caped and de-boned, Gary had brought the horses back to where we had shot from. The 10 ½ year old ram measured 16” X 36”, and scored 178”. I couldn’t have been happier! Thanks Josh and Bob for everything!!!!!! You guys are the best!!!!!!



## The “30-Year Ram”

Kevin Hurley (WY-WSF Life Member #20)

Simply put, I waited 30 years for this moment. In fall 1981, I started down the path of wild sheep work, thanks in large part to an interesting and relatively new organization known as FNAWS. For those of you who know me, the rest is history.

Having retired at the end of January from Wyoming Game and Fish Department after almost 30 years, and going to work “part-time” for the Wild Sheep Foundation, and Wyoming WSF, 2011 was the year to go north!

With support and a promise from my 20-year old son Kyle (WY-WSF Life Member #105) to help his old dad hike the mountain, I booked an Alaska Range Dall sheep hunt with long-time friend, MT-WSF board member, and outfitter, Mike Colpo, owner of Lazy J Bar O Outfitters, Big Timber, MT.

Since 1998, Mike has owned and operated a hunting camp on the Yanert Fork (of the Nenana River), in Alaska’s Game Management Unit 20A. Mike’s is a fly-in backcountry camp, and he runs some top-notch, stout draft-horse cross stock, agile yet tough enough to handle the thick alder and willow brush the Yanert Fork is famous for.

Kyle and I were fortunate to be flown in (and out!) of Mike’s camp by seasoned bush pilot Ron Payne of Wasilla, AK. I have to admit, after living through two plane crashes (1991 and 2002) doing wildlife surveys for WGFD, I thought more than a few times about climbing back into a small plane. This was absolutely my first time in a small plane since my 2002 crash, and a first-time experience for Kyle. I’m not sure whose heart was pounding faster when we took off, Kyle’s or mine.

Once in camp, and given the low clouds and more than intermittent rain, there wasn’t much glassing to be done, but the day before the season opened, we caught a glimpse of 5 Dall rams, the first sheep to be spotted. A good sign!

On opening morning, with clouds still hanging low in the valley, we saddled up and rode into a tributary drainage across the Yanert Fork from the main camp.

After riding and busting brush for 1.5 hours, we tied off and struck out on foot, in search of the rams we had glimpsed the previous day. Within minutes of hiking, we spotted 5 white spots, way up the slope. Through the fog and rain, we were able to make those into rams, including one stellar-looking ram.

We marked their location, and continued scouting up the drainage. After bumping into 2 large ewe/lamb groups, and spotting another 4 rams (including another full curl+ ram), we opted to drop back down the drainage, since that earlier ram was clearly worth another look.

Typical, by the time we retraced our steps, those first 5 rams had moved even higher on the mountain, and as open as that slope was, and noting the time of day, we knew enough to leave them alone. Back in camp, we hatched a plan for Day 2, to come in on these rams from above the next day, entailing a



2-hour ride, followed by a 2,000+ foot climb. What a great feeling that was, trying to climb like I was 27 again (but feeling all 57 of my years!), knowing my son Kyle was mere inches from me, helping me achieve a life's dream.

By late afternoon of Day 2, and following what my son Kyle described as “the hardest hike he'd ever done”, we found these rams, bedded within 100 yards of where they'd been opening day. I credit Mike Colpo and guide Paul Zitzer for their knowledge of Dall sheep behavior and habits; they made the perfect call!

After working into position, Mike set me up at ~290 yards, with a pretty good downhill angle. Now, those who know me know I'm honest, and I have to say, I was pretty excited. After huffing and puffing my way up that mountain, and with the expectation of 30 years of dreaming hopefully about to become reality, I didn't do my best shooting ever!

After Kyle and I both learned some new cuss words from Mike (an expert marksman and former Olympic shooting contender!), I finished this ram from ~220 yards.

I could not have accomplished this feat without the able assistance and guiding ability of Mike Colpo and Paul Zitzer; I will be forever grateful to those two men, and to the young man at my side.

As Mike and I slid down 1,200 feet of scree slope, Paul and Kyle backtracked to bring the horses around to where we'd bottom out with the ram. I'm happy to say this ram met, then exceeded my hopes, taping out at 37.5" long, with 12.5" bases; we aged him at 10+. He was almost 2" past full curl, and he was just the kind of ram I had dreamed about. For 30 years.



**Broadcasting  
night and day.**

**GO**  
**OUTDOOR.**  
**LAMAR**

Wednesday, September 07 2011

Through the efforts of WY-WSF member Travis Collins of Casper, Lamar Outdoor Advertising of Wyoming/W. Nebraska's general manager Korbe Palmer has generously donated 2 months (April-May 2012) of free advertising space on 2 strategically-located billboards in the Casper area, to help Wyoming Wild Sheep Foundation publicize our June 1-2, 2012 annual convention at the Parkway Plaza in Casper. Come next spring, keep an eye out for our billboards, and let us know if you spot them!!

**Broadcasting  
night and day.**

**GO**  
**OUTDOOR.**  
**LAMAR**

Wednesday, September 07 2011





*Photo Credit: Scott Shreve*



66 South Main Street • Buffalo, Wyoming 82834 • (800) 684-7682 • [splure@vcn.com](mailto:splure@vcn.com)



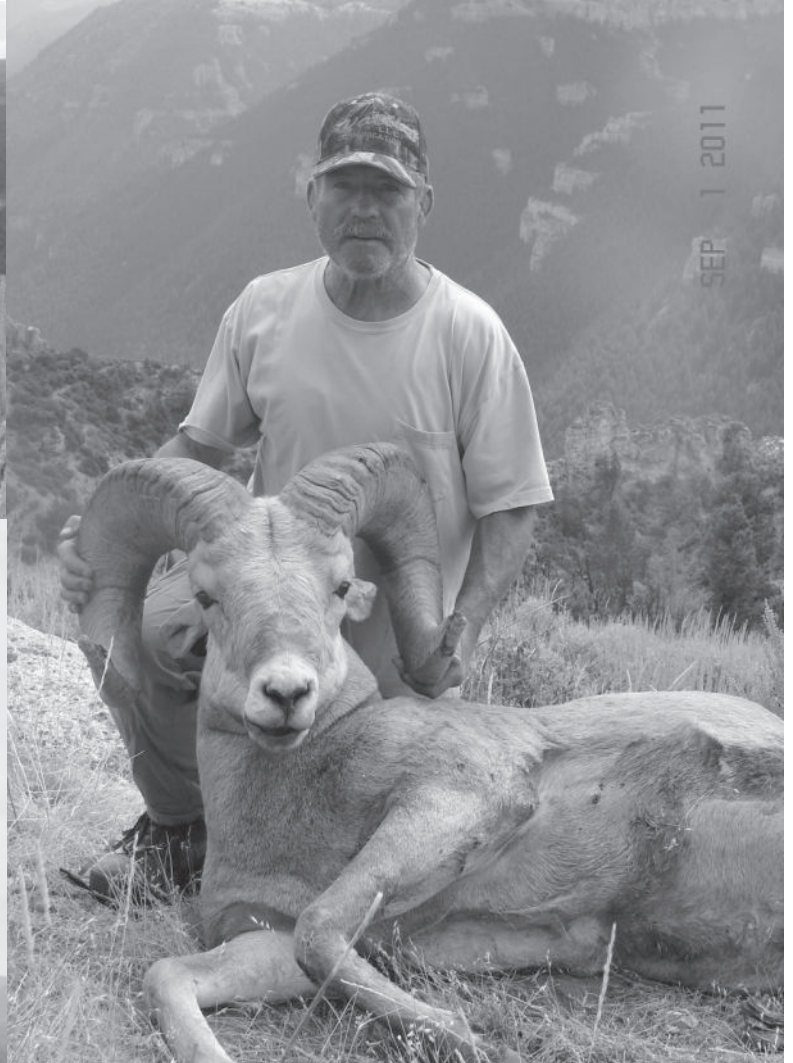
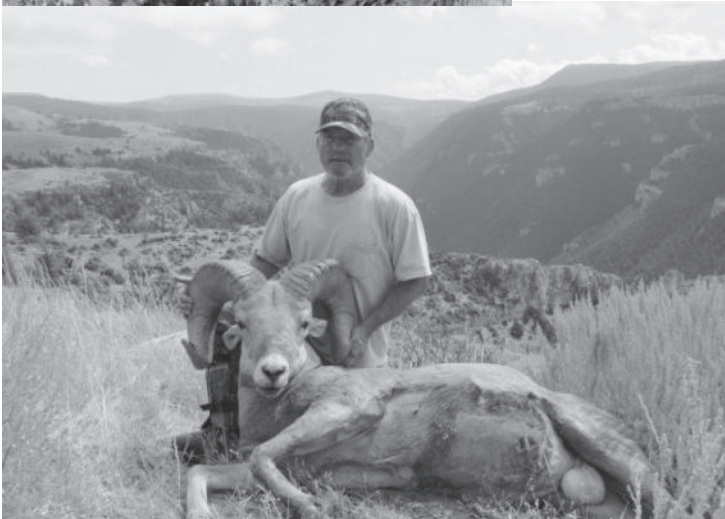
[Editor's Note: In one of the crowning accomplishments during my WGFD career, on January 19, 2006, with funding assistance from the Wyoming Wild Sheep Foundation, the Wyoming Game and Fish Department transplanted 20 bighorn sheep (13 ewes, 2 yearling rams, 3 female lambs, 2 ram lambs) from MTFWP's famed Hunt District 680, on the north side of the Missouri River breaks, into the Devil's Canyon herd, above Lovell.. Who doesn't remember this classic photo by Mark Gocke, WGFD, Jackson, of Billings Flying Service ferrying in two loads of MT bighorns to the Dugan Bench/Devil's Canyon release site?



Well, in what may be the ultimate dividend for wild sheep hunters, Ryan Gamble of Basin, WY (one of 2 resident hunters in HA 12 in 2011) harvested a 6.35 year-old ram (one of the 2 ram lambs from 2006!) on Dugan Bench (within 2 miles of where he'd been released!) this September 1st! Still carrying a black MTFWP eartag, this ram measured 38+” X 16+”, and green scored **186+**; what a great ram!!

During a September 26, 2011 phone interview, Ryan told me he, his wife Ronda, and his brother Fred glassed over 30 rams between 1/2 and 3/4-curl, prior to finding this big dude on opening day. This transplant has been a resounding success to date, and the future holds much promise for HA 12 bighorn hunters. I'm sure this ram did a lot of breeding before he departed this earth!! KH]

*Photo credits: Mark Gocke, WGFD, Jackson & Ryan Gamble, Basin*





[Editor's Note: In another successful transplant story, for the past 12 months, I have received dozens of photos of a white ram (probably 4+ or 5+ years old) hanging out above the railroad tracks, on the west side of Wind River Canyon, from near the mouth of Teeter Canyon, upstream almost to the tunnels. There's no way to know for sure without getting a DNA sample from him and potentially matching him up with Whiskey Basin ancestors, but this ram is quite likely descended from the 43 Whiskey Basin bighorns released at the mouth of Teeter Canyon in Wind River Canyon on January 7, 1995. The best close-up photo I've seen clearly shows pink eyes, leading me to believe he is a true albino ram. He has been seen with up to 8 other "normal-colored" bighorn rams, during the past year. Who knows how many genes this ram has thrown so far? A WYO "Dall" sheep hunt in our future??

*Photo credits: Jim Collins, Thermopolis; Carl & Kamme Jeffries, Thermopolis.; Terri Williams, Thermopolis*





[Editor's Note: Years ago, I came across this interesting account on bighorn sheep behavior from the Philadelphia Times, circa late 1800's; haven't we all seen them do this? Enjoy! KH]

## ROCKY MOUNTAIN SHEEP

### THE PECULIAR USE THEY MAKE OF THEIR BIG HORNS

Very Scarce and Difficult to Kill - How They Curl Themselves Up Into Balls and Roll Over Lofty Precipices - A Frightful Leap

Of all the game animals in the northwest, and particularly Montana, the Big Horn or Rocky mountain sheep furnishes the most sport to huntsmen. Chasing the buffalo across the plains on horseback and killing them with a revolver, which was at one time the favorite method of hunting the big bison, used to be the ne plus ultra of Nimrodic amusements in Montana, but since the buffalo have disappeared hunters have drifted back in to the mountains, where the "Ovis Montana" are to be found during late years in great abundance. There must be lots of fun scampering over the prairie after a 1,500-pound bull, but there is the heat and violent exercise, not to speak of the danger of your horse plunging into a prairie-dog hole and sending you downward to grass at an angle of 15 to 20 degrees. The mountain sheep is always found among the peaks and cliffs in cool altitude and pretty near the timber or perpetual snow line. The Big Horn sheep of the Rocky mountains is a most difficult animal to bag. They are usually found in pairs, often in flocks of from four to forty, and sometimes in bands of a hundred or more. One old sheep-hunter, living on Prior's fork, near here relates that he saw not long ago a flock of eighty-one sheep in the Bitter Root range, and about five years ago, while scouting through the Teton basin, in northern Wyoming, near the southern boundary of the Yellowstone National park, he ran upon a band that must have numbered over 800.

### EXCEEDINGLY SCARCE

These animals range all the way from Rio Grande to the Mackenzie, but at the limits named they are exceedingly scarce and most difficult to kill. Their natural home is among the mountains of the upper Yellowstone and Missouri rivers. Some few are found in Washington territory, Oregon, and California, but the center around which they revolve is the Yellowstone National park and the bordering counties of Montana, Idaho, and Wyoming. Particularly are they plentiful in the mountains from which they take their name - viz, the Big Horn.

Very little is known of the habits of this rare game animal, even by those who have written on this subject. They range winter and summer alike in the same latitudes and altitudes, only in summer they wander farther away than in the opposite season. During the cold months they stay on the southern slopes of the mountains so as to catch the sun.

In the summer they are generally found on the higher benches, when the bunch grass and mountain clover are abundant. Among the peaks where they habituate one of the first things to appear in the spring is the wild onion or leek, which is eagerly sought out and devoured by them. This wild plant imparts to the flesh a delightful flavor, and makes the meat of the Big Horn the most delicious in the mountains. Their greatest enemy is the mountain lion. In fact, the principal diet of the mountain lion is the tender offspring of the "Ovis Montana". When lambs are not to be had, the fierce North American panther does not object to feasting on the parents. These rare sheep are also subject to a sort of scab disease, which, when it becomes epidemic, sweeps off at short notice scores of them, young and old alike. The lambs are brought forth from the 5<sup>th</sup> to the 20<sup>th</sup> of May.

The "Ovis Montana" is adorned with the most remarkable headgear imaginable in the shape of monstrous horns. These are used by them for various purposes, but principally as a means of defense. Astonishing as it may seem, they also use their immense horns to assist them in descending from one lofty eminence to a lower. If in skipping from crag to crag and from ridge to ridge it should become necessary to make a jump downward, no matter what the height, they roll themselves up into a kind of ball, vault out into the air, and, turning a succession of somersaults, keep the ball rolling, so to speak, until they strike on their powerful horns below.

### VERY HARD TO KILL

The shock would kill an ordinary animal, but these hardy denizens of the mountains don't seem to mind it much, for they spring to their feet and go bounding over impossible chasms and jagged rocks until it becomes necessary to make another descent, when the same tactics are repeated.

W.B. Dow, of the Green Mountain Cattle company, relates that he saw near his ranch on Powder river, not long ago, a band of 800 mountain sheep. They were browsing on a lofty cliff, when for some unaccountable reason the flock became stampeded and rushed away like the whirlwind. On they came pell mell to the edge of the cliff, which was cut sharp into a perpendicular decline of fully 1,500 feet. The leaders paused, but there was no help for it. The rear guard crowded them over, and the entire flocks went neck over heels down into space. It was no doubt a curious sight to see 800 mountain sheep doubled up into balls and falling over such a lofty precipice. Down they came, one after another, until the whole band had made the awful jump. As this was such a frightful leap for any breathing creature to make and live, it is not surprising to know that thirteen of the 800 were killed by the concussion. The cowboys of the ranch secured the meat, which they declared far superior to their choice Montana steers.

Some of the mountain-sheep horns attain a remarkable size. One pair brought into this fort last February by a Cheyenne Indian measured seventeen inches in circumference, although only forty inches in length. The ram from which they were taken was a splendid specimen, weighing over 200 pounds, and stood, when erect, nearly up to a man's shoulders. - Fort Keogh Cor. Philadelphia Times.



# Win a **FREE** Fannin Sheep Hunt



*Details on Back*



**WWW.WILD SHEEP FOUNDATION.ORG**

As an added incentive to attend the convention, full registrants at the 2012 WSF "Sheep Show" in Reno are automatically entered into a complimentary drawing for a Carmen Island desert bighorn hunt, sponsored by Kevin Rinke and Mexico Hunts. This hunt will be drawn on Wednesday February 18, 2012. You do not need to be in attendance on Wednesday night to win, but you do need to be a Full Convention Registrant.

**WILD SHEEP**  
Foundation





# Membership Drive 2011-2012

## TERMS AND CONDITIONS

Every new/renewing member and their sponsor will be entered to win the Fannin Sheep hunt.

Contest period is February 13<sup>th</sup>, 2011 through January 21<sup>st</sup>, 2012. Retroactive credit will be given for members who joined, renewed, or upgraded and their sponsors, beginning February 13<sup>th</sup>, 2011.

### OFFER VALID FOR:

NEW Annual, International, Three-Year, Family, and Life Memberships and their sponsors; RENEWING Annual, International, Three-Year, and Family Members.

New and/or renewing Annual and International members receive 1 ticket in the drawing, Three-Year receive 3 tickets, Family 2 tickets, and Life Memberships 10 tickets. Sponsors\* of new members receive 1 ticket for each Annual and International, 3 tickets for each Three-Year, 2 for each Family, and 5 for each Life member they enlist. Drawing to be held at the Wild Sheep Foundation Convention in Reno, Nevada on January 21<sup>st</sup>, 2012. Hunt dates are for the 2012 hunting season only or by mutual agreement between the winner and the donor. Wild Sheep Foundation is not liable for hunt outcome.

\*A sponsor is defined as a member who recruits new members to join the Wild Sheep Foundation. Please make sure that all "recruited" members mention their sponsor upon joining in order to receive the additional tickets for the drawings. A "new" member is one who has not been an active member within the last 12 months.

Need not be present to win and void where prohibited by law.

## WSF SALUTES OUR HUNT DONOR:



Midnight Sun Outfitting, Ltd.  
www.midnightsunoutfitting.com  
msunout2@telus.net  
867.633.2885



*Alan, Mary Ellen, Jessie & Logan Young*

## YES! I want to join the Wild Sheep Foundation

- Annual Member, \$45 (U.S.) **1 TICKET**
- Family Membership, \$80 (U.S.) **2 TICKETS**
- Three-Year Member, \$120 (U.S.) **3 TICKETS**
- Life Member, \$1000 (U.S.) **10 TICKETS**  
\$750, age 59-64 \$500, age over 65  
Payment Plans at \$100 per month or \$250 per quarter.  
(Please send photocopy of proof of age such as driver's license.)

- International Member, \$100 (U.S.) **1 TICKET**  
(Non-North American)

- My check is enclosed for \$ \_\_\_\_\_ U.S. Funds

Name: \_\_\_\_\_

Address: \_\_\_\_\_

City: \_\_\_\_\_

State/Prov: \_\_\_\_\_ Zip/P.Code: \_\_\_\_\_

Country: \_\_\_\_\_

Phone: \_\_\_\_\_

Email: \_\_\_\_\_

Bill my:  Visa  MC  Discover  AMX

No: \_\_\_\_\_

3 or 4 Digit Security #: \_\_\_\_\_ Exp. Date: \_\_\_\_\_

Signature: \_\_\_\_\_

As a **NEW** member, please note if you have been encouraged to join by a WSF member. He/she will receive a ticket (s) into the drawing.

Sponsor Name: \_\_\_\_\_

Phone: \_\_\_\_\_

## RETURN TO:

Wild Sheep Foundation  
Attn: Membership Dept.  
720 ALLEN AVE.  
CODY, WY 82414-3402  
For questions call: 307.527.6261  
Fax: 307.527.7117  
e-mail: info@wildsheepfoundation.org



# Wyoming Chapter

## Life Members



|    |                     |    |                      |     |                     |     |                     |
|----|---------------------|----|----------------------|-----|---------------------|-----|---------------------|
| 1  | Ron Ball (D)        | 50 | Joshua Robert d'Elia | 97  | Michael J. Mahon    | 146 | Gary Ploeckelman    |
| 2  | Jeff Reynolds       | 51 | Ralph J. Campoli     | 98  | Pepper Neustal      | 147 | Cody Crocker        |
| 3  | Dave Steger         | 52 | John Zenz            | 99  | David Connor        | 148 | Jim Gibbs           |
| 4  | Don Schmalz         | 53 | Jesse Troutman       | 100 | Joe DeCora          | 149 | Stephen K. Martin   |
| 5  | Harry Whyel         | 54 | Tom Sauter           | 101 | Elaine B. Benton    | 150 | Tom Trapp           |
| 6  | Freddie Goetz       | 55 | Thomas P. Grainger   | 102 | Mark Fountain (D)   | 151 | Wayne Landrey       |
| 7  | Gene Hardy          | 56 | Mike Crocker         | 103 | Jeffrey Adam Milton | 152 | Chancy Brown        |
| 8  | Hale Kreycik        | 57 | Dyrk Eddie           | 104 | Bill Pidd           | 153 | Brent Manning       |
| 9  | Dr. R. D. Keeler    | 58 | Bob Kelez            | 105 | Kyle Hurley         | 154 | Eric Rhodenbaugh    |
| 10 | Jim Collins         | 59 | Wayne Suda           | 106 | Steve Hornady       | 155 | Catherine E. Keene  |
| 11 | Mike Martin         | 60 | Scott Jankowski      | 107 | Michael J. Wellman  | 156 | Mike Wakkuri        |
| 12 | Jack Hildner        | 61 | Solvay Minerals Inc. | 108 | B. Joe Coy          | 157 | Brandon R.          |
| 13 | Kent Stevinson      | 62 | Ron Dean             | 109 | Tim Hockhalter      |     | Edgeington          |
| 14 | Fritz Meyer         | 63 | Ed Novotny (D)       | 110 | David C. Stull      | 158 | Timothy J. Raver    |
| 15 | Kathy Gay           | 64 | E. Perry Edgeington  | 111 | Roger Donahue, Jr.  | 159 | Greg Murtland       |
| 16 | Keith West          | 65 | Randall K.           | 112 | Bernard R. Harvey   | 160 | R. Mark LeFavre     |
| 17 | Lud Kroner          |    | Edgeington           | 113 | Terry Davis         | 161 | Mark Bruscano       |
| 18 | Serge d'Elia        | 66 | Michael J. Thompson  | 114 | Tom Christiansen    | 162 | Chip Mooneyham      |
| 19 | Terry Marcum        | 67 | Dan Coletti          | 115 | Dave W. Daigle      | 163 | Betsy Grainger      |
| 20 | Kevin Hurley        | 68 | Douglas Liller       | 116 | Keith Dana          | 164 | James T. Grainger   |
| 21 | Craig Pitters       | 69 | Ron Elkin            | 117 | John Coulter        | 165 | Kristen E. Grainger |
| 22 | Sam Pancotto        | 70 | Tom Spawn            | 118 | Joseph Konwinski    | 166 | Lauren L. Grainger  |
| 23 | Vincent Allegra     | 71 | Bruce John           | 119 | Bill Skelton        | 167 | Bob Barlow          |
| 24 | Dirk Edgeington     |    | Thompson             | 120 | Ron Pomeroy         | 168 | Bill Rouse          |
| 25 | Cindy Reynolds      | 72 | Robert Sherd         | 121 | Jeffrey A. Keim     | 169 | Robert L. Mills     |
| 26 | Fred Mau            | 73 | Larry Brannian       | 122 | Gretchen Hurley     | 170 | Cindy Spriggs       |
| 27 | David S. Luzmoor    | 74 | Dan Gay              | 123 | Terry Janssen       | 171 | Tony Spriggs        |
| 28 | Craig Kling         | 75 | Ron Lockwood         | 124 | Lenore Smith        | 172 | Mack Miller         |
| 29 | Sam Green           | 76 | Scott Bushnell       | 125 | Joe Vollmer         | 173 | Cody Brown          |
| 30 | Cole Benton         | 77 | Jim Smith            | 126 | Dennis Claman       | 174 | Allen Kerkhove      |
| 31 | Rodger Kendrick     | 78 | Wayne Knapp          | 127 | Don Peay            | 175 | Jess Forton         |
| 32 | Brian Valentine     | 79 | Debi Van Buren       | 128 | Randall S.          | 176 | Mike Lapeyre        |
| 33 | Alfred P. Weeden    | 80 | Mike Hildner (H)     |     | Edgeington          | 177 | William "Butch"     |
| 34 | James L. Scull Jr.  | 81 | Patrick Zummo        | 129 | Wally Needham       |     | Townsend, III       |
| 35 | Kay Thomas          | 82 | Mike Turek           | 130 | Al Benton           | 178 | Mary Ann Patton     |
| 36 | Fred Thomas         | 83 | Douglas D. Cline     | 131 | Steven Wildeman     | 179 | Stephen Pedigo      |
| 37 | Lou Misterly, Jr.   | 84 | Dan Pocalia          | 132 | Bob Sundeen         | 180 | David Ostlund       |
| 38 | Lawrence I.         | 85 | William T. Hill, Jr. | 133 | Gary Roebing        | 181 | Robert Flansburg    |
|    | Masserant           | 86 | Robert Van           | 134 | Allan A. Holland    | 182 | Daniel Hinz         |
| 39 | Fred Pierce         |    | DeRostyne            | 135 | Ron Crispin         | 183 | Tammy Scott         |
| 40 | Tyler D. Benton     | 87 | Tad Giovanini        | 136 | Wayne Jones         | 184 | Bradley A. Thoren   |
| 41 | Fred L. Novotny (D) | 88 | Robert W. Jacob      | 137 | Gary Keene          | 185 | Keith Micke         |
| 42 | Lee Livingston      | 89 | Pat Poppe            | 138 | Jim Verplancke      | 186 | Rick Young          |
| 43 | Richard Lennington  | 90 | Richard Wobser       | 139 | Opey Hlavnicka      | 187 | David B. Ball       |
| 44 | Lynn Stewart        | 91 | Rusty Gooch          | 140 | Robert Joslin       | 188 | Robert Finn         |
| 45 | Russ Green          | 92 | Todd Alley           | 141 | Ken Metzler         | 189 | Mike Pilch          |
| 46 | Truman A. Wilkin    | 93 | John Wilson          | 142 | Gary Lease          | 190 | Mark Virant         |
| 47 | Tex Goerger         | 94 | Doug McWhirter       | 143 | Jenny Benton        | 191 | Donald P. Chase     |
| 48 | Ron Wilmes          | 95 | Glenn Anderson (D)   | 144 | Jackie Benton       | 192 | John L. O'Brien     |
| 49 | Wally Young         | 96 | David G. Soderquist  | 145 | Brenton Scott       | 193 | Rod Krebs           |



# Wyoming Chapter Life Members

|     |                     |     |                                 |     |                          |     |                 |
|-----|---------------------|-----|---------------------------------|-----|--------------------------|-----|-----------------|
| 194 | Bryan Berg          | 243 | Doug Stinnette                  | 292 | Shaun Friesen (D)        | 339 | Andy Andrews    |
| 195 | John W. Harris      | 244 | Vonnie Stinnette                | 293 | Daniel Clifton           | 340 | Kade Benton     |
| 196 | Cort Feeley (D)     | 245 | Cindy Collins                   | 294 | James Creaser            | 341 | Bill Richards   |
| 197 | Brian McKay         | 246 | John Baughman                   | 295 | Bobbi Troutman           | 342 | Gray Thornton   |
| 198 | Mike Milton         | 247 | Joni Miller                     | 296 | Tara Troutman            | 343 | Ruth Esperance  |
| 199 | John Stevenson      | 248 | Darin Hubble                    | 297 | George Joest             | 344 | Will Garrouette |
| 200 | Kathy B. Townsend   | 249 | Kenneth A. Cook                 | 298 | Joseph D. Freeman        | 345 | Eugenio Baeza   |
| 201 | Curtis D. Townsend  | 250 | Robert C. Borgialli             | 299 | Scott Heny               | 346 | Greg Parrott    |
| 202 | Leslie Greene       | 251 | David M. Nahrgang               | 300 | Rollin W. Pederson       | 347 | Mike Kinney     |
| 203 | Albert Ellis        | 252 | Paul A. Chervenak               | 301 | Jerry Hampshire          | 348 | Jason Bleyens   |
| 204 | Richard Schenk      | 253 | Steve Kutzer                    | 302 | Troy Vest                | 349 | Greg Strait     |
| 205 | James Schroeder     | 254 | Samuel Lockwood                 | 303 | Carl Black               | 350 | Brady West      |
| 206 | Roger Sebesta       | 255 | "Trapper" Jack L.<br>Morey, III | 304 | Pat O'Neill              | 351 | Steve Furtney   |
| 207 | Tom Arthur          |     |                                 | 305 | Craig Nakamoto           | 352 | Mike Tonn (D)   |
| 208 | Pete Widener        | 256 | Joann Morey                     | 306 | Mo Salvesson             | 353 | Joe Hutchison   |
| 209 | Brian Mutch         | 257 | Rachel M. Morey                 | 307 | John Pearson             | 360 | Ryan Turk-Bly   |
| 210 | Oscar Carlson       | 258 | John Hockett                    | 308 | George Lawrence          | 375 | Nila Clifton    |
| 211 | Jim Wetzel          | 259 | Robert Model                    | 309 | Jose Madrazo<br>Ambrosio |     |                 |
| 212 | Ross Taylor         | 260 | Shanda Shatzer                  |     | Jerry Alexander          |     |                 |
| 213 | Sheri Howe          | 261 | Kate Skelton                    | 310 | David Cole               |     |                 |
| 214 | Stan Alles          | 262 | Cyle Fife                       | 311 | David Dybvig             |     |                 |
| 215 | Leon Atwood         | 263 | Philip L. Havnvik               | 312 | Karen M. Moody           |     |                 |
| 216 | Jeff Martin         | 264 | Lucy Turek                      | 313 | Larry Hicks              |     |                 |
| 217 | Donny Robbins       | 265 | Steve Kilpatrick                | 314 | Randy Hopp               |     |                 |
| 218 | Steve Shivy         | 266 | Tom Easterly                    | 315 | Gary R. Calvert          |     |                 |
| 219 | Jack L. Morey, Jr.  | 267 | Scott D. Butler                 | 316 | Brian Gee                |     |                 |
| 220 | Curt Shatzer        | 268 | Jess Dingman                    | 317 | Page Mays                |     |                 |
| 221 | Wayne Fisher        | 269 | Patrick Mooney                  | 318 | Vance Diggins            |     |                 |
| 222 | Charles LaPorte     | 270 | Wade Alexander                  | 319 | Carl Shores              |     |                 |
| 223 | Jerry Galles        | 271 | Shelby Martin                   | 320 | Mark Hampton             |     |                 |
| 224 | Michael L. Brownell | 272 | Dan Merrill                     | 321 | Dave Skaggs              |     |                 |
| 225 | Rosemary Gooch      | 273 | Rod Litzel                      | 322 | Michael J. Porter        |     |                 |
| 226 | Greg Larsen         | 274 | Brad Borgialli                  | 323 | Mike Brown               |     |                 |
| 227 | Kerry Fischer       | 275 | Shane Hampshire                 | 324 | Daryl Lutz               |     |                 |
| 228 | Julie Fischer       | 276 | Jeff Shelley                    | 325 | Gloria Taylor            |     |                 |
| 229 | Jim Wilson          | 277 | Michael Allison                 | 326 | Richard W.<br>Petersen   |     |                 |
| 230 | Gary Butler         | 278 | Art Anderson                    | 327 | Tom Nordeen              |     |                 |
| 231 | Cal O'Neal          | 279 | Diana Yellen                    |     | Adrian G. Gonzalez       |     |                 |
| 232 | M. Shawn Nelson     | 280 | David Todd                      | 328 | Kelley Kellogg           |     |                 |
| 233 | Allen Mooney        | 281 | Loren Kohnen                    | 329 | Luis A. Chapa            |     |                 |
| 234 | Roger Coguill       | 282 | Brian K. Loveland               | 330 | Jim Coffrini             |     |                 |
| 235 | Don South           | 283 | Larry Thoney                    | 331 | Scott Shreve             |     |                 |
| 236 | Bill Williams       | 285 | David F. Bishop                 | 332 | Meade Dominck            |     |                 |
| 237 | Bill Suranyi        | 286 | Tom Widiker                     | 333 | David Hubbs              |     |                 |
| 238 | Connie Meyer        | 287 | William S. Trapp                | 334 | Larry Mauriello, Jr.     |     |                 |
| 239 | Justin Poppe        | 288 | Mark "Jake" Carter              | 335 | Jose L. Mallo            |     |                 |
| 240 | Kale Benton         | 289 | Randall Kresie                  | 336 | Ryan Fischer             |     |                 |
| 241 | Jason Teeples       | 290 | Justin Trail                    | 337 |                          |     |                 |
| 242 | Steve Kozisek       | 291 | Jay Wolfenden                   | 338 |                          |     |                 |





|                         |
|-------------------------|
| Grant In Aid (GIA) Form |
|-------------------------|

**Project Title:** \_\_\_\_\_

**Project Type:** \_\_\_\_\_

**Waterhole/Transplant/Habitat/Research/Education/Other (Explain)**

**Affiliate:** \_\_\_\_\_

**Outfitter Organization/BLM/Game & Fish/Forest Service/Other (Explain)**

**Location of Project:** \_\_\_\_\_

**State/Territory/Area**

**Description Of Project:**

**Problem to be Solved:**

**Describe How You Propose Solving Problem:**

**BIOGRAPHY OF APPLICANT**

**Name:** \_\_\_\_\_

**Address:**

**Daytime Phone Number:** \_\_\_\_\_ **Fax:** \_\_\_\_\_

**E-mail:** \_\_\_\_\_

**Are you a current member of WY-WSF?** \_\_\_\_\_ **Yes** \_\_\_\_\_ **No**



Grant In Aid (GIA) Form

|                                                             | Cost to be funded<br>by WY-WSF Grant | Cost to be funded<br>by other cooperators |
|-------------------------------------------------------------|--------------------------------------|-------------------------------------------|
| Equipment.....                                              | \$ _____                             | \$ _____                                  |
| Services.....                                               | \$ _____                             | \$ _____                                  |
| <b>Permanent, full time salaries will not be considered</b> |                                      |                                           |
| Publishing.....                                             | \$ _____                             | \$ _____                                  |
| Monitoring.....                                             | \$ _____                             | \$ _____                                  |
| Supplies.....                                               | \$ _____                             | \$ _____                                  |
| <b>Please itemize then total</b>                            |                                      |                                           |
| Other (Specify).....                                        | \$ _____                             | \$ _____                                  |
| <b>Totals</b>                                               | \$ _____                             | \$ _____                                  |

**OTHER ORGANIZATIONS PROVIDING FINANCIAL AID OR SUPPORT OF THE PROJECT**  
**(Include any pending amounts applied for.):** \_\_\_\_\_  
 \_\_\_\_\_

**ENDORSEMENT:**

**I hereby agree to abide by the stated requirements of a WY-WSF grant. I also understand all WY-WSF funding stipulations and will provide all necessary reports if I receive a grant from WY-WSF.**

**Signature of Applicant** \_\_\_\_\_

**Title** \_\_\_\_\_ **Date** \_\_\_\_\_

**MEDIA CONTACTS:** Please list one or more media sources in your area that we may contact with details of your project:

- 1)
- 2)
- 3)
- 4)
- 5)
- 6)



***Mark Your Calendars:***

**Wyoming Wild Sheep Foundation Annual Convention**

**June 1-2, 2012**

**Parkway Plaza, Casper, WY**

**Details inside!**



**Wyoming Wild Sheep Foundation PO Box 666, Cody, WY 82414**