

Sweetwater Rocks – Bighorn Sheep Reintroduction? The Process



~~Final Report and Recommendations~~

It is the goal of the Wyoming Bighorn/Domestic Sheep Interaction Working Group to maintain healthy bighorn sheep populations while sustaining an economically viable domestic sheep industry in Wyoming.

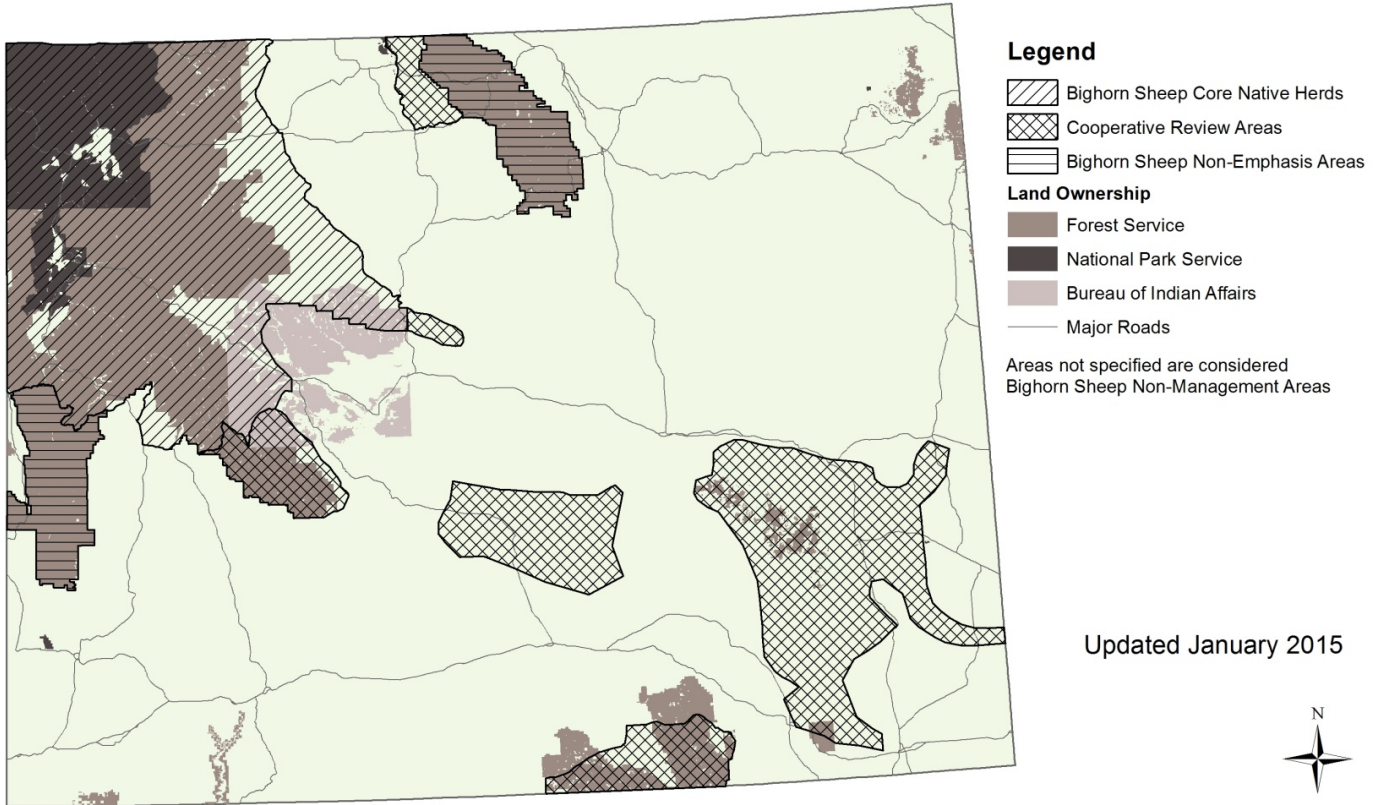
**State-wide Bighorn/Domestic Sheep
Interaction
Working Group**

September 2004

Now Wyoming Statute 11-19-604

Wyoming Bighorn Sheep-Domestic Sheep Interaction Working Group

Wyoming Bighorn Sheep Management Areas



Updated January 2015



0 25 50 100 Miles

Subject to the "Terms of Agreement" as it appears in the Final Report and Recommendations from the Wyoming State-wide Bighorn/Domestic Sheep Interaction Working Group

Wyoming Bighorn Sheep-Domestic Sheep Interaction Working Group

Appendix M

DEFINITIONS – BIGHORN SHEEP MANAGEMENT AREAS

Core, Native Herds

- Domestic sheep may occur within the boundaries of the core, native bighorn sheep herds. All efforts will be made to prevent contact between bighorn and domestic sheep, as agreed to by the Statewide Bighorn/Domestic Sheep Interaction Working Group.

Cooperative Review Areas

- These are the areas of suitable bighorn sheep range where proposed changes in bighorn sheep management or domestic sheep use will be cooperatively evaluated.

Non-Emphasis Areas

- No effort will be made to prioritize/emphasize bighorn sheep unless agreed to by the Statewide Bighorn/Domestic Sheep Interaction Working Group.
- Any existing bighorn sheep populations will not be protected at the expense of domestic sheep grazing.

Bighorn Sheep Non-Management Areas

- These areas are outside of identified management areas.
- Bighorn sheep are permitted to occur in these areas, but are not actively encouraged.

Appendix L – Translocation into Cooperative Review Areas

- **Internal Review**

- Potential transplant site identified (DONE – previously by WGFD, currently by private landowner/Wyoming Stockgrowers Association)
- Feasibility/Suitability/Habitat Evaluation
- Tentative commitment of funding support by WY-WSF, WGBGLC, WGFD
- Source of sheep (Devils Canyon and/or Ferris-Seminole)
 - Disease testing of source herd (Needed in both locations – Devils Canyon (n=20) and Ferris-Seminole (n=30))
- Map of anticipated range of transplanted sheep (year-round).
- Presence of domestic sheep on public or private lands documented.
- Completion of a risk assessment (likelihood of contact between BHS and DS).
- Postseason population objective established.
- Recommendation from Lander Region and BSWG to Wildlife Administration

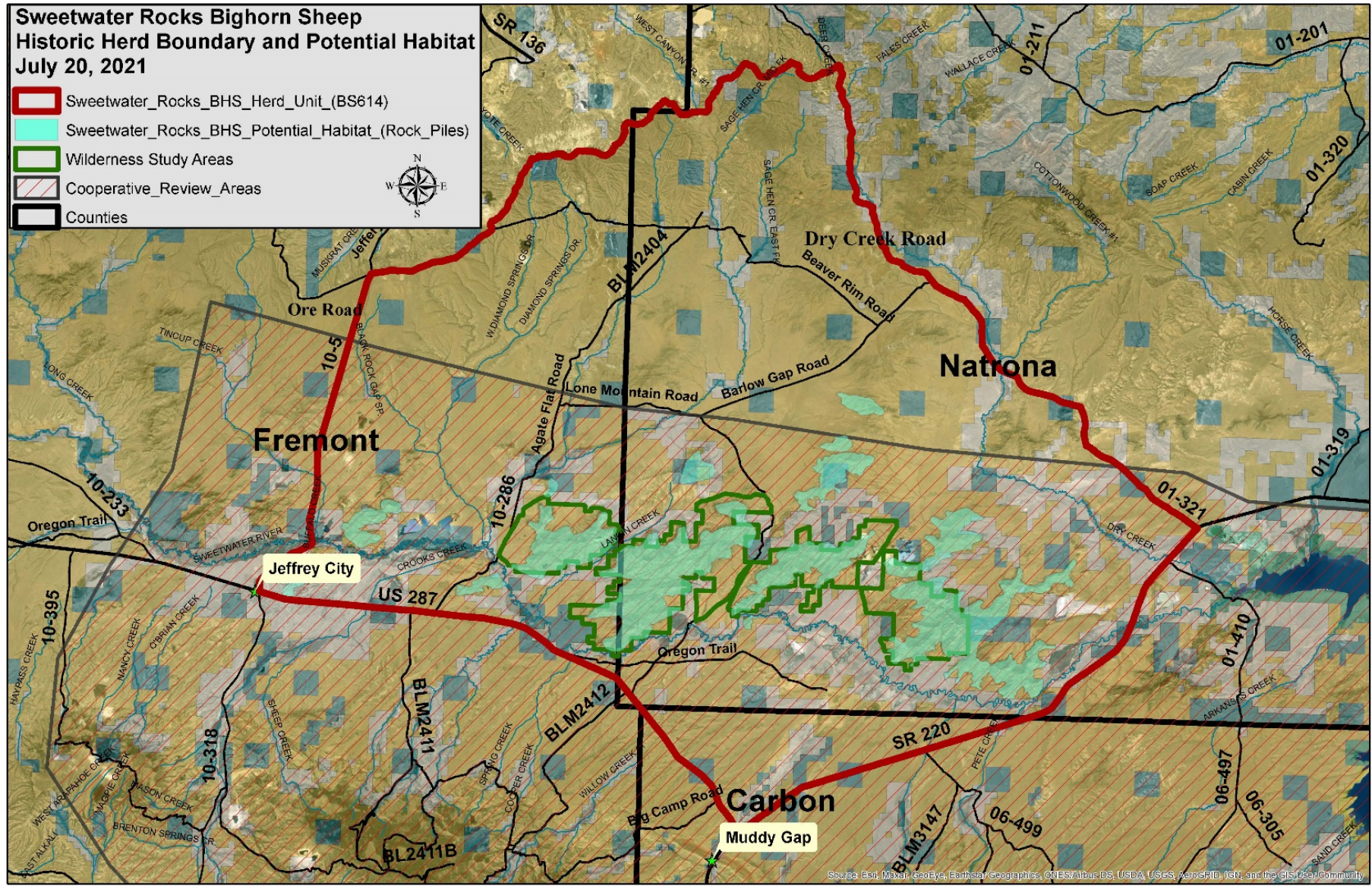
Appendix L – Translocation into Cooperative Review Areas

- **External Review**

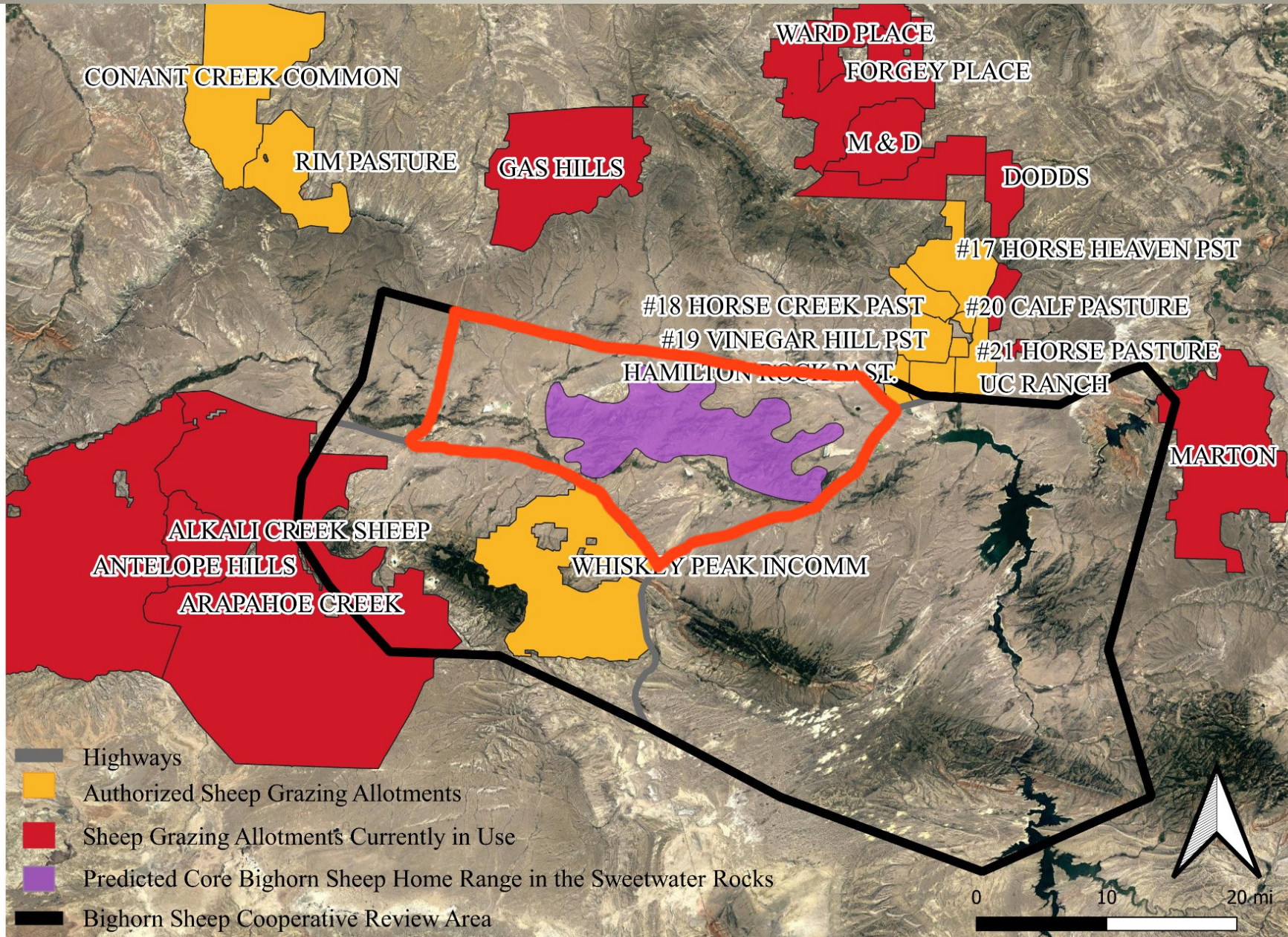
- Contact land management agency.
- Contact public land livestock permittees.
- Contact potentially involved private landowners/lessees.
 - Will buffer zones be sought?
 - Hold harmless agreements.
 - Ability of permittees to graze livestock on allotments permitted to them.
 - Summarize all discussions for official record.
- Following one-on-one contacts, group meeting to discuss the proposal, including;
 - land management agency personnel
 - grazing permittees
 - private landowners
 - lessees
 - members of the SW Interaction Working Group
- If support from larger group to proceed;
- With feedback from all contacts, WGFD will hold 2 open houses or public meetings in 2 different towns;
- Accept written comments.
- Summarize written comments/official account of support/opposition.
- Summary by WGFD Lander Region to Wildlife Administration, then Director's Office, then to WGF Commission.
- Approval by WGF Commission
- Obtain voluntary agreements with cattle producers (on public and private land) that no conversion from cattle to domestic sheep will be attempted for 10-15 years. Agreements not required, but encouraged.
- There should be a hold harmless agreement in place
- Based on input from this meeting, develop a draft-final proposal and e-mail to stakeholder group (or hold another meeting).
- Based on any additional input, develop a final proposal.

**Sweetwater Rocks Bighorn Sheep
Historic Herd Boundary and Potential Habitat
July 20, 2021**

- Sweetwater_Rocks_BHS_Herd_Unit_(BS614)
- Sweetwater_Rocks_BHS_Potential_Habitat_(Rock_Piles)
- Wilderness Study Areas
- Cooperative_Review_Areas
- Counties



Source: Esri, Maxar, GeoEye, Earthstar Geographics, CNES/Airbus DS, USDA, USGS, AeroGRID, IGN, and the GIS User Community



CONANT CREEK COMMON

RIM PASTURE

GAS HILLS

WARD PLACE

FORGEY PLACE

M & D

DODDS

#17 HORSE HEAVEN PST

#18 HORSE CREEK PAST

#20 CALF PASTURE

#19 VINEGAR HILL PST

#21 HORSE PASTURE

HAMILTON ROCK PAST.

UC RANCH

ALKALI CREEK SHEEP

ANTELOPE HILLS

WHISKEY PEAK INCOMM

MARTON

ARAPAHOE CREEK

-  Highways
-  Authorized Sheep Grazing Allotments
-  Sheep Grazing Allotments Currently in Use
-  Predicted Core Bighorn Sheep Home Range in the Sweetwater Rocks
-  Bighorn Sheep Cooperative Review Area



Comments

Please submit any written comments no later than **November 15th** by either mailing to:

WGFD

Attn: Daryl Lutz

260 Buena Vista Ln.

Lander, WY 82502

Or on the Web at:

<https://wgfd.wyo.gov/Regional-Offices/Lander-Region/Sweetwater-Rocks-Bighorn-Sheep>